

After the Procedure

- Your throat may feel sore
- You will receive instructions as to when you can eat/drink
- When normal feeling resumes in your throat (usually after one hour) you may start taking small sips of water. If you can swallow easily, you may drink clear liquids as usual
- Someone must drive you home and you should not drive until at least 24 hours after your procedure
- The results will be sent out to your family doctor or the referring doctor



Ultrasound camera (TEE Probe)

**If you have any questions
about your appointment,
please contact the
Non-invasive Cardiology
Department at
James Paton Memorial
Regional Health Centre
at 709.256.5600**



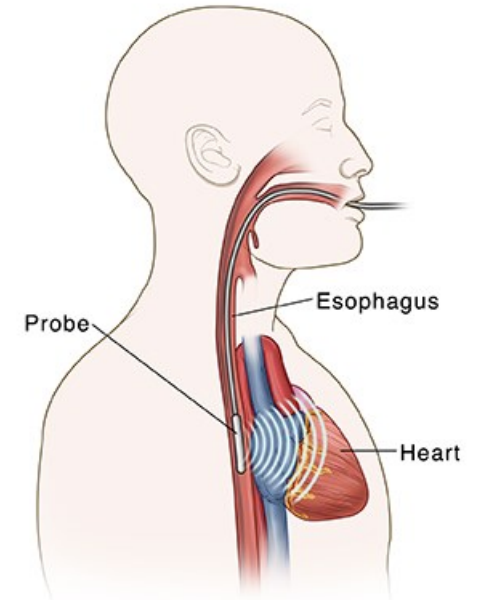
healthy people, healthy communities

CH CPS 023

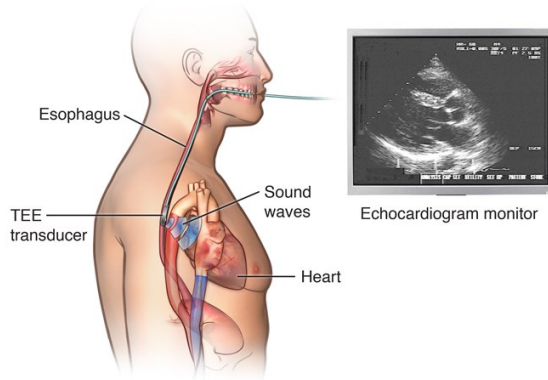


**Central
Health**

Transesophageal Echocardiography



Transesophageal echocardiogram (TEE)



Transesophageal Echocardiography

A Transesophageal Echocardiogram (TEE) is a diagnostic test that takes pictures of your heart. A TEE involves a flexible tube with an ultrasound camera (probe) at its tip. This tube is inserted through the mouth and into the esophagus and stomach. A TEE allows your doctor to view certain cardiac structures that are not always seen by a standard echocardiogram outside the chest.

Preparation

- Do not eat or drink anything, including water, for at least 8 hours before the test. If you must take medications, take them with only a sip of water
- Bring a list of your medications with you
- Wear comfortable clothing
- Women of child-bearing age should have a pregnancy test completed at least a week before your appointment
- Be sure to bring a licensed adult with you to the appointment. This person must drive you home. You must not drive for at least 24 hours after the procedure
- Tell the respiratory therapist or doctor if:
 - * You are allergic to any medications and/or xylocaine (freezing spray)
 - * You take any medication
 - * You have stomach, lung or swallowing problems
 - * You are diabetic
 - * You are pregnant

The Procedure

- Staff will connect you to equipment that monitors your vital signs (blood pressure, heart rate, and oxygen level)
- An intravenous (IV) catheter will be inserted so that IV fluids and medication will be given
- Your throat will be frozen with a freezing spray (it will have a medicinal taste)
- The doctor will then ask you to swallow the probe (tube), which is smaller than most food you swallow
- It is uncomfortable, but not painful and you can breathe normally
- The test usually lasts about 20-30 minutes. When it is done the probe, IV and electrodes will be removed. You will be monitored after the effects of the sedation wears off

